

Plan your weekend with the official guide of weekly events from Visit Gainesville, Alachua County

March 14-20, 2024



Be Informed.

The below information was accurate at the time of publishing. Please contact organizers directly to double check details.

Enjoy a Celebration of Cultures and Welcome the Persian New Year at Nowruz and International Festival

Saturday, March 16 – Sunday, March 17, 11 a.m. – 5 p.m.

Shoppes at Thornebrook | 2441 NW 43rd St., Gainesville, FL 32606

The Nowruz and International Festival celebrates the Persian New Year and invites guests to experience cultures from around the world with traditional dancing, food with international flair, art, fashion and more. Admission is free.

Sponsored in part by Visit Gainesville, Alachua County



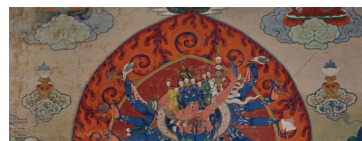
Take in the Colors and Flavors of the Season at Frog Songs Organics Spring Festival

Saturday, March 16, 1 p.m. – 6 p.m. | Frog Song Organics

4317 NE US Hwy 301, Hawthorne, FL 32640

Enjoy farm tours, u-pick strawberries, live music, food trucks and more at the family-friendly farm festival. Learn about organic farm practices with guided tours and educational workshops. Admission is free, RSVP online.

Sponsored in part by Visit Gainesville, Alachua County



Explore Art and Culture from the Himalayas and Throughout Asia at Museum Nights: Gateway to Asia

Thursday, March 14, 6 p.m. – 9 p.m. | Harn Museum of Art

3259 Hull Rd., Gainesville, FL 32608

Experience art in unique ways with tours and activities inspired by the new exhibition Gateway to Himalayan Art. Dance to the catchy rhythms of K-pop with DJ Parallelz, DJ Winelights and DJ Squish. Hands-on activities include origami and creating a paper lantern. Admission is free.

Image: (detail) Chakrasamvara with Consort Vajravarahi, Kham region, eastern Tibet; 19th century



Jazz Up Spring with a Song Catalog by Musical Trailblazers at Santa Fe College Sasser Fine Arts Hall

Friday, March 15, 7 p.m. | Santa Fe College Jackson N. Sasser Fine Arts Hall

3000 NW 83rd St., Gainesville, FL 32606

The Santa Fe College Jazz Ensemble and Jazz Combo perform selections originally written and performed by trailblazers of jazz. The 15-piece jazz ensemble and 8-piece jazz combo alternate music from influential composers Duke Ellington and Count Basie.



Stroll Through a Charming Downtown and Meet Local Artists and Makers at High Springs Artwalk

Saturday, March 16 12 p.m. – 5 p.m. | Downtown High Springs

High Springs Artwalk features 15-20 local artists and makers situated on the sidewalks of downtown. Browse local shops and boutiques offering specials and sales.



For a complete listing of this weekend's events visit: <https://bit.ly/whatsgood314>

To get What's Good delivered straight to your inbox:

Visit: <http://bit.ly/WhatsGoodAlachuaCounty>

Plan your weekend with the official guide of weekly events from Visit Gainesville, Alachua County

March 14-20, 2024



Find Your Groove with a Night of Jazz at the Live and Local Concert Series Friday, March 15, 7 p.m. | Bo Diddley Plaza Downtown Gainesville

The Live and Local Concert Series features homegrown musical talent live on the outdoor stage at Bo Diddley Plaza in downtown Gainesville. Friday's concert features vocal powerhouse Jernie, classic swing, Latin and pop with In Full Swing and original compositions from Jane K Collective. Admission is free.



Meet Seymour the Water Buffalo and Cinnamon the Bison at March Moo-dness Sunday, March 17, 12 p.m. – 4 p.m. | Critter Hills 26022 NW CR 239, Alachua, FL 32615

With nearly 150 cows, Critter Creek Farm Sanctuary is the largest cow sanctuary in the country. For the first time, their 200-acre Critter Hills facility opens up to the public for a day fun. Meet cows, horses, donkeys and browse plant-based food vendors including Vegan Gator, Top Drawer Seets, Nature's Juice Cafe and more.



Prepare for Next Month's Solar Eclipse with an Immersive Planetarium Experience at "Eclipse"

**Saturday, March 16, 7 p.m. | Kika Silva Pla Planetarium
3000 NW 83 St., Building X, Gainesville, FL 32606**

Leading up to the solar eclipse on April 8, Kika Silva Pla Planetarium presents "Eclipse: The story of our nearest neighbor in space." Take a journey of discovery under the 34-foot projection dome and learn about the origins, composition and mechanics of the moon.

Sponsored in part by Visit Gainesville, Alachua County



Join Adia Whitaker, Director of the Àşę Dance Theatre Collective (Brooklyn, NY) for an Afro-Haitian Dance Masterclass

**Wednesday, March 20, 6:30 p.m. | Eastside Community Center
2841 E University Ave., Gainesville, FL 32641**

The UF Center for Arts, Migration and Entrepreneurship welcomes Adia Whitaker for a residency in Gainesville. This class is part of a series of events including masterclasses and public discussions based on the dance film project Following the Road to Ose Tura. Admission is free.



Strike a Chord with a 20-time Grammy Award-Winning Artist at the Pat Metheny Dream Box Tour

**Wednesday, March 20, 7:30 p.m. | UF Phillips Center
3201 Hull Rd., Gainesville, FL 32611**

A winner of Grammy® Awards across four consecutive decades, guitarist Pat Metheny is known to bring something unique to every performance.

The images and materials included in the Alachua County What's Good guide of weekly events may be copyrighted works and property of the content provider, and thus subject to legal protections. Display by the County of such does not authorize another to copy, reproduce, distribute, publish, display, modify, or in any way exploit any such works.

This publication contains information about events, venues and activities in Alachua County, Florida. Reasonable efforts have been made to ensure the information is accurate. We are not responsible for errors or omissions in the information provided. For complete details, contact the host directly. The information is not advice, and should not be treated as such. Without prejudice to the generality of the foregoing paragraph, we do not represent, warrant, undertake or guarantee that the information is correct, accurate, complete or non-misleading. We will not be liable to you in respect of any special, indirect or consequential loss or damage. If a section of this disclaimer is determined by any court or other competent authority to be unlawful and/or unenforceable, the other sections of this disclaimer continue in effect.

For a complete listing of this weekend's events visit: <https://bit.ly/whatsgood314>

To get What's Good delivered straight to your inbox:

Visit: <http://bit.ly/WhatsGoodAlachuaCounty>

